



GAT MONTHLY MEMBERSHIP PROGRESS REPORT

Results as of: 6/30/2024

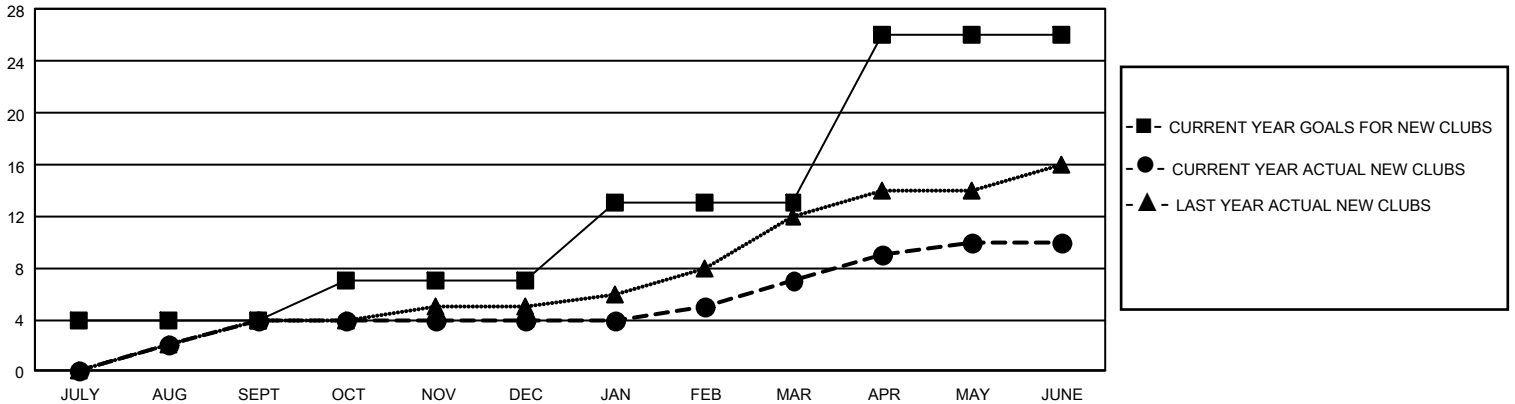
GMT Constitutional Area 7, Group A

REPORT DOES NOT INCLUDE CLUBS IN UNDISTRICTED AREAS.

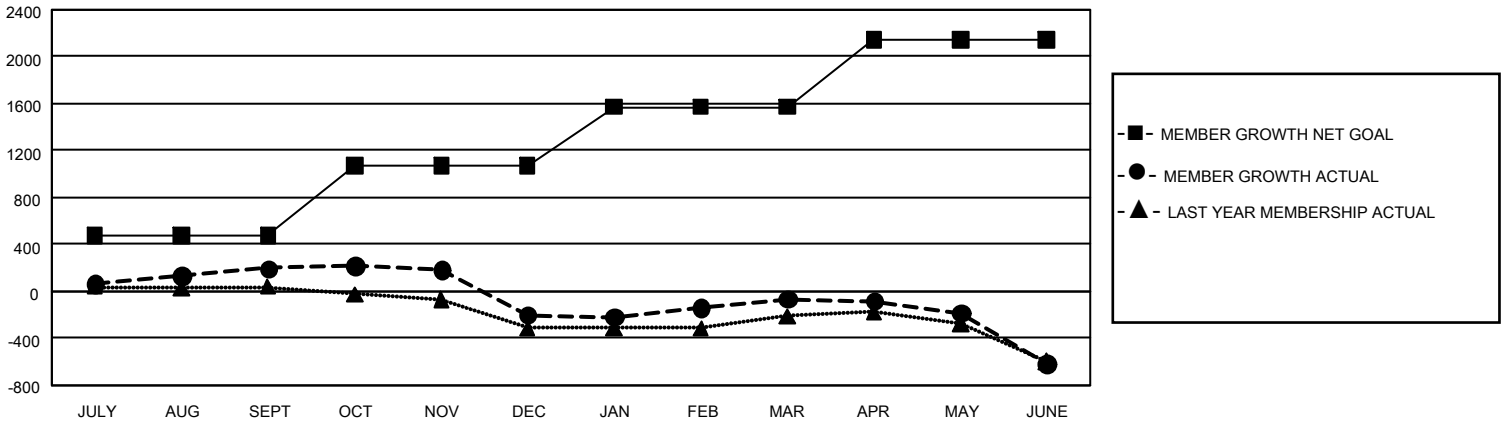
Clubs			
RESULTS FOR 2023-2024			
QUARTER	NEW CLUB GOAL	NEW CLUBS	DROPPED CLUBS
JULY/AUG/SEPT	12	4	10
OCT/NOV/DEC	9	0	2
JAN/FEB/MAR	18	3	2
APR/MAY/JUNE	39	3	8

Members			
RESULTS FOR 2023-2024			
QUARTER	MEMBER GROWTH NET GOAL	MEMBER GROWTH ACTUAL	DROPPED MEMBERS ACTUAL (including transfers)
JULY/AUG/SEPT	475	897	607
OCT/NOV/DEC	597	579	900
JAN/FEB/MAR	500	925	681
APR/MAY/JUNE	575	843	1,249

GOALS AND ACTUAL NEW CLUBS CUMULATIVE



GOALS AND ACTUAL MEMBERS CUMULATIVE



DROPPED CLUBS: 22	766 CLUBS OF 1,157 ADDED 1 OR MORE NEW MEMBERS	GENDER DISTRIBUTION	
		MALE 13,535 (61.45%) FEMALE 8,473 (38.47%) NON BINARY 6 (0.03%) PREFER NOT TO ANSWER 12 (0.05%)	
DROPPED MEMBERS		CLICK HERE FOR CUMULATIVE MEMBERSHIP DATA	
DECEASED 334 CLUB CANCELLED 32 OTHER 3,035 TOTAL 3,401	TOTAL FAMILY UNIT MEMBERS 3,392 FAMILY MEMBERS PAYING HALF DUES 1,738		